

Index No. L-17

CERTIFICATE OF LOCATION OF GOVERNMENT CORNER

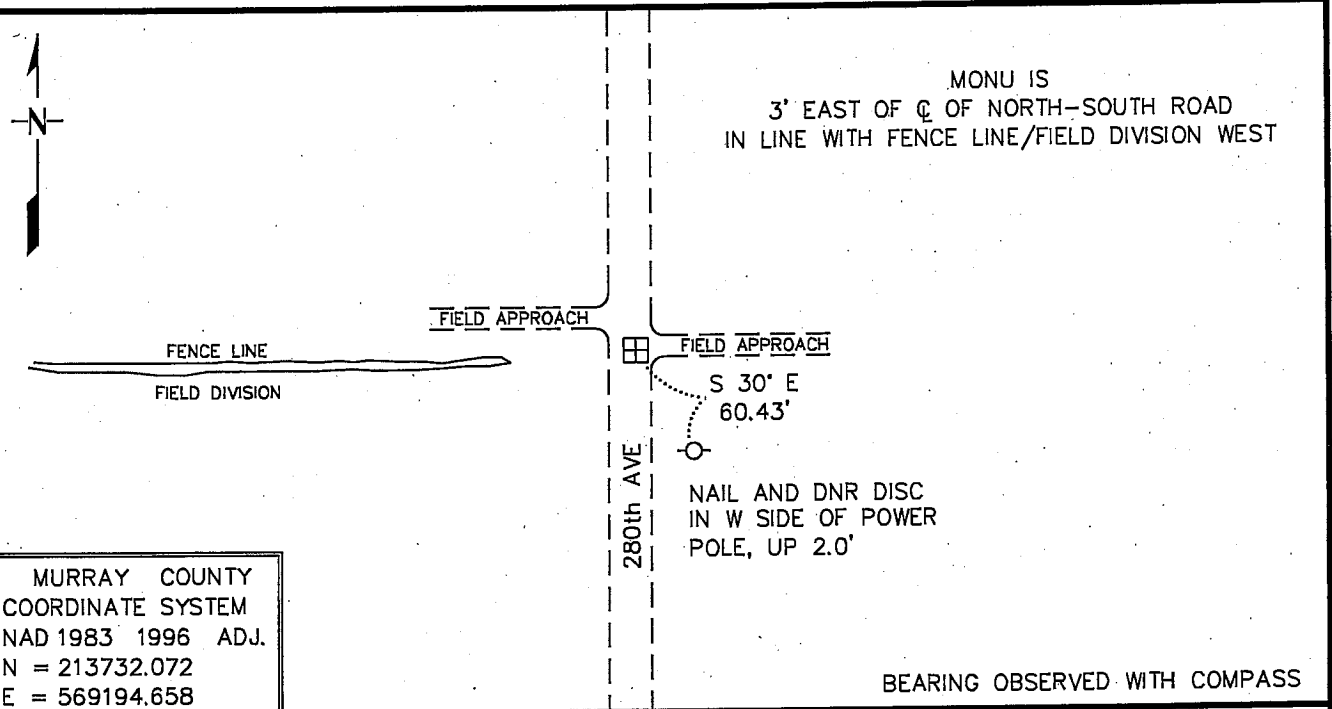
EAST QUARTER Corner of Section 15, Township 108 N, Range 39 W
5th Principal Meridian, State of Minnesota, County of MURRAY

At the corner location shown on the sketch:

■ On 7/28/2009 found a 9" X 9" X 16" FIELD STONE, DOWN 2.7'
DATE

■ left monument as found, lowered monument, removed monument (explain)

■ On 7/28/2009 Placed a 3/4" X 24" REBAR WITH PLASTIC CAP STAMPED
DATE "MN DNR LS 17003", DOWN 0.4', OVER STONE



Statement of evidence for this corner location is on back of this page.

8/31/09
TRA00706.00.00.01

I certify that this document was researched and prepared by me or under my direct supervision.

SIGNATURE *Renee W. Shoppert* DATE 9/14/09 License Number 17003
Title: Land Surveyor Professional Engineer County Surveyor County Engineer

East Quarter Corner of Section 15, Township 108 North, Range 39 West

The DNR Division of Lands and Minerals contacted the following for survey information:

Minnesota History Center in St. Paul
Murray County Recorder's Office
Murray County Highway Engineer's Office
Zieske Land Surveying, Inc. of Windom
Bueltel-Moseng Land Surveying of Marshall

- 1861 U.S. General Land Office notes, obtained from the Minnesota History Center, show the corner marked with a wood post with pits and mound.
- 1901 Surveyor's Record Book A, Pages 240 and 254, obtained from the County Recorder's Office, contains a survey by D.L. Bighorn, Redwood County Surveyor, which record was made on June 12, 1915, by J.R. Johnston, Murray County Surveyor, from original plat on file in the office of the Town Clerk of Holly Township. Survey shows corner but a description of what kind of monument was found or set is not given. The corner is shown:
2646.0 feet from the northeast corner of Section 15
2646.0 feet from the southeast corner of Section 15
- 1915 June 1, Murray County Highway Department section corner information website, states that a stone was located at the corner. The following is also noted:
"call for more details"
- 1915 June, a Surveyor's Record Book, obtained from the County Highway Engineer's Office, states the following about the corner:
"stone set on location of govt stake by J.R. Johnston, County Surveyor Murray County"
The corner is shown:
2646.0 feet from the northeast corner of Section 15
2646.0 feet from the southeast corner of Section 15
- 2009 July 28, the DNR Division of Lands and Minerals hired a backhoe to dig for evidence of the corner. A 9 inch by 9 inch by 16 inch field stone was found 2.7 feet below the surface. Continued digging to a depth of 4 feet but no other evidence of a monument was found. Also, scanned the bottom of the excavation with an electronic metal detector but no metal attraction was obtained. The excavation was 14 feet north-south by 8 feet east-west by 4 feet deep the center being on the centerline of a north-south road and in line with a fence/field division west. During the excavation, natural ground was encountered at a depth of 1.5 to 2 feet. The 9 inch by 9 inch by 16 inch field stone was reset as found and a 1 inch by 24 inch long rebar was set on its south edge and a ¾ inch by 24 inch rebar with a plastic cap stamped "MN DNR LS 17003" was set over the stone and found it to be:
3 feet east of the centerline of a north-south road
in line with a fence line/field division west

Consulted with LaMoine Meyer, Holly Township Clerk, about the 1901 survey by D.L. Bighorn, and he said that the survey information that the Township has is the same as what's on file at the County Recorder's Office.

Analysis of the above information led the DNR Division of Lands and Minerals to conclude that the ¾ inch by 24 inch long rebar with a plastic cap stamped "MN DNR LS 17003", which was set over a found 9 inch by 9 inch by 16 inch field stone marks the location of the corner.